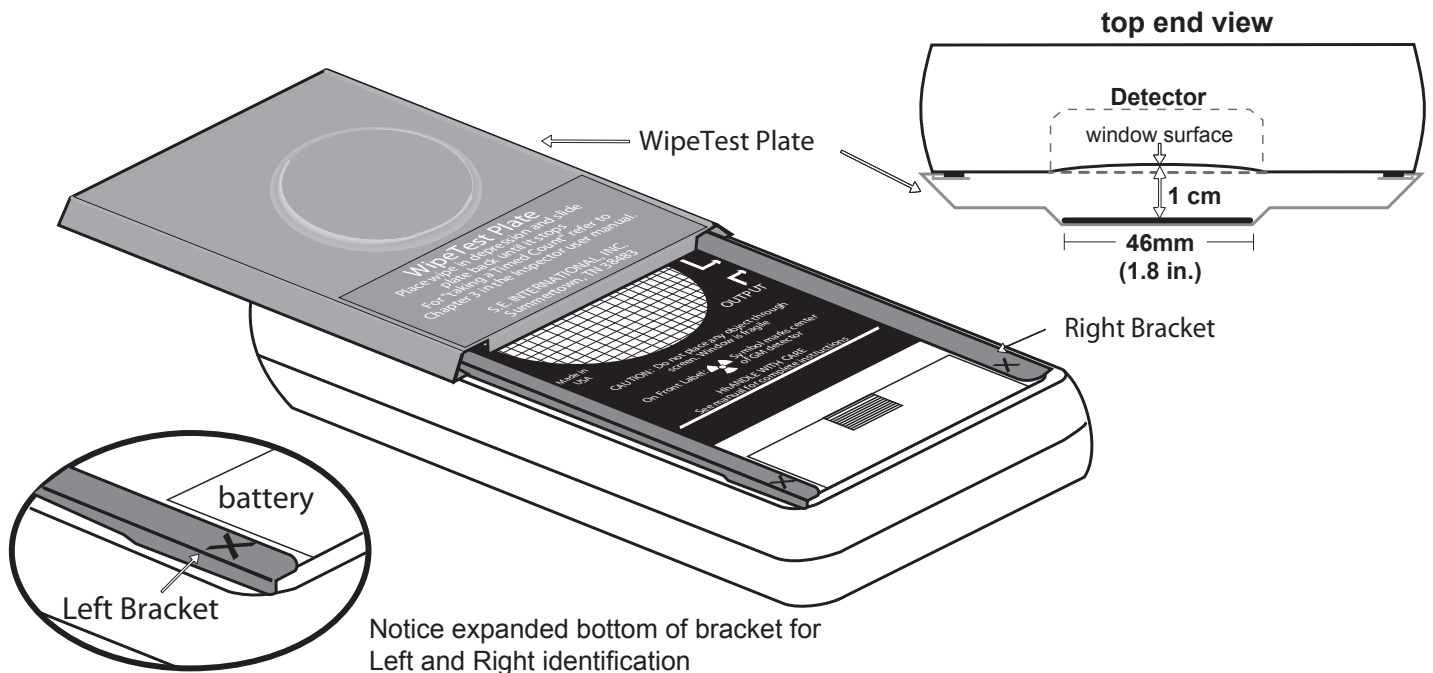


# SEI Inspector Wipe Test Plate

The stainless steel WipeTest Plate slides easily onto the SEI Inspector positioning the depression and wipe directly in front of the GM tube window at a fixed distance of 1 centimeter. The WipeTest plate is removable for general surveying or decontamination. It can be used for protecting the GM from damage and prevent the instrument from being contaminated while the SEI Inspector is not in use.

Material: .025 inches thick 304 stainless steel  
Size: 3.1 x 4.46 inches  
Weight: 2.5 oz. including left and right bracket  
Warranty: 1 year



## Installation

If you ordered your SEI Inspector with the WipeTest Plate included, there is no assembly required.

If you ordered the WipeTest Plate as a Kit, please complete the following assembly procedure.

1. Remove the two rubber strips from the back of the SEI Inspector.
2. Remove the four screws from the back of the instrument.
3. Place the two spacers over the top enclosure screw holes.
4. Place the left and right bracket (see illustration above) over screw holes and insert screws.
5. Tighten the bottom screws and gently hand tighten top screws. Over tightening the top screws will make the WipeTest Plate hard to slide on and off.
6. Slide the WipeTest Plate onto the SEI Inspector.

## Operation

1. With the SEI Inspector digital display face up and the WipeTest plate in place, slide the WipeTest Plate up until the depression is visible.
2. Place wipe in the depression and slide plate back in place until it stops.
3. Set timer on the SEI Inspector and start the timed count.
4. When the timed count is finished, note the total counts on the LCD.

Note: If needed, decontaminate WipeTest Plate before inserting a new wipe to be counted.