

*Inspector EXP*TM

OPERATION MANUAL



RADIATION[®]
A • L • E • R • T

S.E. International, Inc. P.O. Box 39, 436 Farm Rd. Summertown, TN 38483 USA
1.800.293.5759 | 931.964.3561 | Fax: 1.931.964.3564
www.seintl.com | radiationinfo@seintl.com

Contents

Chapter 1: Introduction	3	The X Axis	15
How The SEI Inspector EXP Detects Radiation	3	The Y Axis	15
Precautions	3	Observer USB Meter Screen	15
Chapter 2: Features	4	Enable Alarm	15
The LCD Display	4	Zero	15
Indicators	4	Units/Echo Display	15
The Switches	5	Averaging Time	15
Mode Switch	5	Chapter 8: Observer USB Calibration Software	16
Off/On/Audio Switch	5	General Discussion of Calibration	16
The Backlight	5	Pulse Calibration	16
Set Button	6	Efficiency Calibration	17
+ and - Buttons	6	Exposure Rate Calibration	19
The Detector	6	Chapter 9: Built in Isotope Efficiencies	20
The Input/Output Ports	6	Built in Isotope Efficiencies	20
Chapter 3: Operation	7	Decay	20
Starting the SEI Inspector EXP	7	Selecting a Built-In Isotope Efficiency	20
Units of Measurement	7	Selecting Between DPM and Bq	20
Display Update	7	Chapter 10: Troubleshooting	21
Maximum level	7	Chapter 11: Basics of Taking Measurements	22
Response Time (Autoaveraging)	7	How to Detect Background Radiation	22
Autoranging	8	How To Survey a Surface	22
Operating in Dose/Rate Modes	8	How to Perform a General Survey	22
Operating in Timer Mode	8	How to Determine Alpha, Beta, or Gamma source.	23
Taking a Timed Count	8	Radiation Measurement Units	24
Using Dose/Rate Modes While Timer is On	9	Converting CPM to mR/hr	24
Using The Alert	9	Chapter 12: Glossary of Common Terms	25
Utility Menu	10	Appendix A: Technical Specifications	27
Options	10	Appendix B: Limited Warranty	28
Setting the Internal Clock	11	Calibration Database Application	29
Interfacing with an External Device	11		
Chapter 4: Common Procedures	11		
Establishing the Background Count	11		
Environmental Area Monitoring	11		
Checking for Surface Contamination	12		
Chapter 5: Maintenance	12		
Calibration	12		
General Maintenance Tips	12		
Chapter 6: Basics of Radiation and Its Measurement	13		
Ionizing Radiation	13		
Types of Ionizing Radiation	13		
X-Rays	13		
Gamma Rays	13		
Beta Radiation	13		
Alpha Particles	13		
Chapter 7: Observer USB Software	14		
Installing the Observer USB Software	14		
Connect to The SEI Inspector EXP	14		
Preferences	14		
Using the Data Logging Feature	14		
Show Grid	15		
Observer USB Chart Screen	15		

Chapter 1: Introduction

The SEI Inspector EXP is a health and safety instrument that is optimized to detect low levels of radiation. It measures alpha, beta, gamma, and x-ray radiation (ionizing radiation only).

Its applications include:

- Detecting and measuring surface contamination
- Monitoring possible radiation exposure while working with radionuclides
- Screening for environmental contamination
- Detecting noble gases and other low energy radionuclides

How The SEI Inspector EXP Detects Radiation

The SEI Inspector EXP uses a Geiger-Mueller tube to detect radiation. The Geiger tube generates a pulse of electrical current each time radiation passes through the halogen quenched tube and causes ionization. Each pulse is electronically detected and registers as a count. The SEI Inspector EXP displays the counts in the mode you choose.

The number of counts detected by the SEI Inspector EXP varies from moment to moment due to the random nature of radioactivity. A reading is expressed more accurately as an average over time, and the average is more accurate over a longer time period. *For details, see Operating in Timer Mode in Chapter 3.*

Precautions

To keep the SEI Inspector EXP in good condition, handle it with care, and observe the following precautions:

- CAUTION: Never touch the SEI Inspector EXP to a surface that may be contaminated. You may contaminate the instrument.
- Do not leave the SEI Inspector EXP in temperatures over 100° F (38° C) or in direct sunlight for extended periods of time.
- Do not get the SEI Inspector EXP wet. Water can damage the circuitry and the mica surface of the Geiger tube.
- Do not put the SEI Inspector EXP in a microwave oven. It cannot measure microwaves, and you may damage it or the oven.
- This instrument may be sensitive to and may not operate properly in radio frequency, microwave, electrostatic, and electromagnetic fields.
- If you do not expect to use the SEI Inspector EXP for longer than one month, remove the battery to avoid damage from battery corrosion. Change the battery promptly when the battery indicator appears on the display.
- CAUTION: When using the unit at altitudes higher than 8000 feet (2438.4 meters), it is possible that the tube window can rupture.

Chapter 2: Features

The SEI Inspector EXP measures alpha, beta, gamma, and x-ray radiation. It is optimized to detect small changes in radiation levels and to have high sensitivity to many common radionuclides. *For more information, see Appendix A, Sensitivity to Common Radionuclides.* This chapter briefly describes the SEI Inspector EXP's functions. *For more information on how to use the SEI Inspector EXP, see Chapter 3: Operation.* The SEI Inspector EXP counts ionizing events and displays the results on the liquid crystal display (LCD). You control which unit of measurement is shown by using the mode switch. Whenever the SEI Inspector EXP is operating, the red count light flashes each time a count (an ionizing event) is detected *Figure 2 (8).*

The LCD Display *Figure 2 (1)*

The LCD (*liquid crystal display. Figure 1*) shows various indicators according to the mode setting, function(s) being performed, and battery condition as shown below.

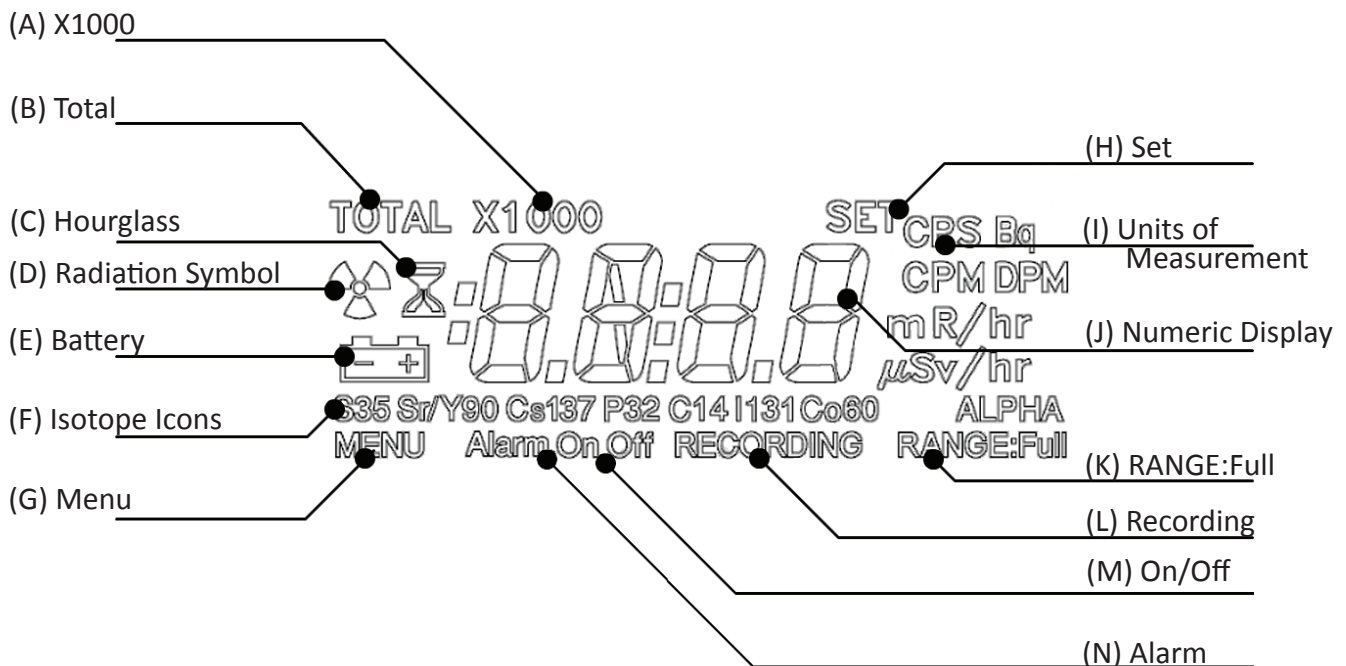


Figure 1

Indicators

- X1000 (A) appears when the numeric display is to be multiplied by 1000.
- TOTAL (B) appears when the SEI Inspector EXP is in Timed Count (Total/Timer) mode.
- An hourglass (C) appears to the left of the numeric display during a timed count.
- A Radiation Symbol (D) appears to the left of the numeric display when the Alert mode is activated.
- A Battery Icon (E) appears to the left of the numeric display indicating low battery voltage.
- The Isotope Icons (F) identify the user selected isotope efficiency for calculating activity. *See Chapter 9: Built in Isotope Efficiencies.*
- MENU (G) appears upon entering the menu.
- SET (H) appears when you are setting the timer (the numeric display shows the timed period instead of the current radiation level) and while adjusting settings in the Utility and Alarm Menus.
- The current unit of measurement (I)—CPM, CPS, mR/hr, μSv/hr, Bq, or DPM—is displayed to the right of the numeric display.
- The Numeric Display (J) shows the current radiation level in the unit specified by the mode switch setting.
- RANGE:Full (K) appears when the radiation present exceeds the upper detection limit of the SEI Inspector EXP.
- RECORDING (L) appears when the SEI Inspector EXP is logging data to the internal memory.
- On/Off (M) indicates that a feature is on or off in the utility menu.
- Alarm (N) indicates that an alarm threshold has been met and that the alarm has been triggered.

The Switches

The SEI Inspector EXP has 2 switches on the front and 3 buttons on the end panel. Each switch has 3 settings which are described below.

Mode Switch *Figure 2(2)*

mR/hr μ Sv/hr: The numeric display shows the current radiation level in milliroentgens per hour or, when SI units are used, in microsieverts per hour.

- In *mR/hr* mode, The SEI Inspector EXP displays the radiation level from .001 to 100.
- In *μ Sv/hr* mode, The SEI Inspector EXP displays the radiation level from .01 to 1000.

See Utility Menu in Chapter 3 for details on how to switch between modes.

CPM/CPS: In CPM, the display shows the current radiation level in counts per minute from 0 to 350,000. When using SI units, the display shows the radiation level in counts per second from 0 to 5000. When X1000 is shown on the display, multiply the numeric reading by 1000 to get the complete radiation level.

Timed Count (Total/Timer): The display shows the accumulated total of counts from 1 to 9,999,000. When X1000 is shown on the display, multiply the numeric reading by 1000 to get the complete radiation level. *For details, see Taking a Timed Count in Chapter 3.*

Off/On/Audio Switch *Figure 2 (3)*

Audio: The SEI Inspector EXP is on and makes a clicking sound for each radiation event detected.

On: The SEI Inspector EXP is operating, but the audio is off.

Off: The SEI Inspector EXP is not operating.

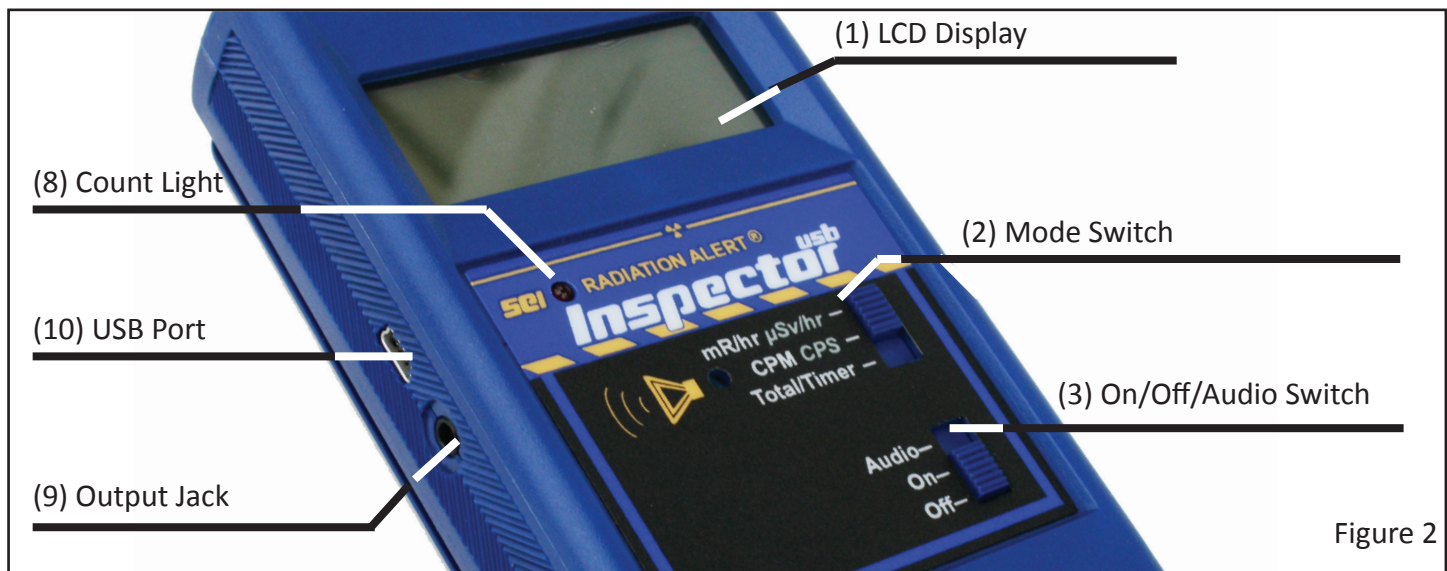


Figure 2

The Backlight

The LCD has a backlight that can be activated for the default 10 seconds by pressing the + button. The duration time of the backlight can be changed with the software. If the duration time has been changed, you can restore the default time of 10 seconds in the utility menu. *See Utility Menu in Chapter 3 for more information on using the utility menu.*

Set Button *Figure 3 (5)*

The Set button is used to set the Alert or Timer in normal operating mode and to select items in the Utility Menu. See *Chapter 3 Using the Alert, Taking a Timed Count, and Utility Menu*.

+ and - Buttons *Figure 3 (6)*

The + and - buttons are used to adjust the numeric display for timed counts, alert settings, and to make selections in the utility menu.

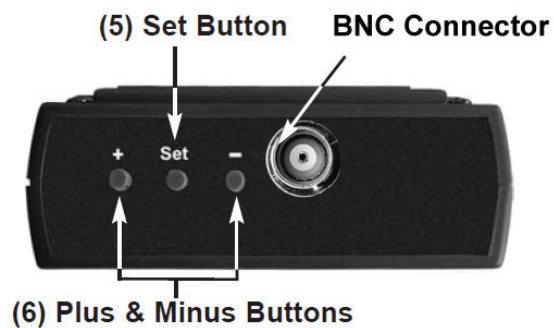


Figure 3

The Detector

CAUTION: The mica surface of the Geiger tube is fragile and should be handled with care. Be careful not to let anything penetrate the screen.

The SEI Inspector EXP uses a two-inch, thin window Geiger tube, commonly called a “pancake tube.” The screen on the probe of the SEI Inspector EXP is called the window *Figure 4 (1)*. It allows alpha and low-energy beta and gamma radiation, which cannot get through the metal probe handle, to penetrate the mica surface of the tube. The small radiation symbol on the back of the probe indicates the center of the Geiger tube.

The Input/Output Ports

The Output Port *Figure 2 (9)*

The Output port allows you to interface the SEI Inspector EXP to a computer, data logger, or other device.

The USB Port *Figure 2 (10)*

The USB Port above the Output jack allows you to interface the SEI Inspector EXP to a PC for use with the Observer Software. For details, see *Chapter 7 Observer Software*.

The BNC Connector

The BNC connector is used to connect the external EXP probe to the base unit. Check that the cable is firmly connected to both the probe end and the base unit to ensure proper operation of the SEI Inspector EXP. When using the carrying case, close the flap prior to connecting the cable to the base unit.

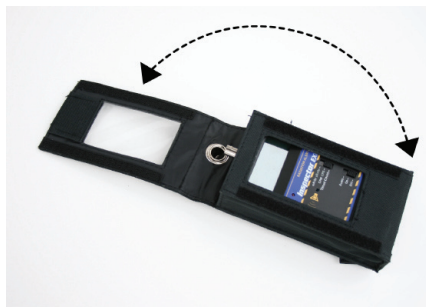


Figure 4

Chapter 3: Operation

Starting the SEI Inspector EXP

Before starting the SEI Inspector EXP, ensure that the external probe is connected both to the unit and the probe end. Install a standard 9-volt alkaline battery in the battery compartment located in the lower rear (Figure 4). *Note: Place the battery against the bottom wall, and make sure the wires are placed along the side of the battery and not under it.*

To start the SEI Inspector EXP, set the mode switch to the mode you want, and set the bottom switch to On or Audio. The SEI Inspector EXP then begins a 6-second system check. All indicators and numbers are displayed. After the system check, the radiation level is displayed in the selected mode. Approximately 30 seconds after you start the SEI Inspector EXP, a short beep indicates that enough information has been collected to ensure statistical validity.

Units of Measurement

The SEI Inspector EXP is designed for use of conventional units; milliroentgens per hour (*mR/hr*) and counts per minute (*CPM*) or SI units microsieverts per hour (*μSv/hr*) and counts per second (*CPS*). To switch between conventional or SI units choose UNITS in the Utility Menu. *For details, see Utility Menu in Chapter 3.*

Display Update

In the dose, rate, and count modes, the numeric display is updated every 3 seconds. In Timer mode, the numeric display is updated every second.

Maximum level

When the maximum level for the current mode is reached, the SEI Inspector EXP beeps for 3 seconds, pauses for 3 seconds, and repeats that pattern. Also, the RANGE:Full icon is displayed and the numerical values displayed will show OVER instead of the specific rate. The beeping pattern and the flashing display continue until the level decreases or the SEI Inspector EXP is turned off.

Response Time (Autoaveraging)

When the radiation level is less than 6,000 CPM, the reading in any of the dose rate modes is based on the radiation detected in the previous 30 seconds. In order to give a quicker response to changes, when the radiation level exceeds 6,000 CPM in any 30 second period, the reading is based on the previous 6 seconds. When the radiation level exceeds 12,000 CPM in any 30-second period, the reading is based on the previous 3 seconds. *Note: You can choose the 3 second response at any radiation level by using the Utility Menu detailed in Chapter 3. Refer to the following table.*

After 30 second start-up if instrument is detecting	The reading will be based on an average of the previous
(<100 CPS) <6000 CPM or <1.75 mR/hr	30 seconds
(100 -200 CPS) 6000-12,000 CPM or 1.75-3.6 mR/hr	6 seconds
(>200 CPS) >12,000 CPM or >3.6 mR/hr	3 seconds fast response

Autoranging

When radiation levels increase in some modes over certain preset levels, the SEI Inspector EXP uses autoranging, automatically changing to the X1000 scale. While in CPM or Timed Count (Total/Timer) mode, whenever X1000 is shown above the numeric display, multiply the displayed reading by 1000 to determine the radiation level. mR/hr, μ Sv/hr, and CPS are not applicable.

Mode	Ranges as they are displayed	
CPM	0 to 2,999 CPM	> 9,999
		X1000
		10.000 (10,000) CPM to 350 (230,000)PM
Timed Count (Total/Timer)	0-9,999 counts	> 9,999
		X1000
		10.00 (10,000) to 9999 (9,999,000) counts

Operating in Dose/Rate Modes

Caution: Be sure there is no obstruction between the detector window and the source being monitored/surveyed. Avoid making measurements with the GM window facing the sun, as it could affect your readings.

When the mode switch is set to mR/hr and CPM or μ Sv/hr and CPS, the numeric display is updated every 3 seconds unless you are using the Timer mode. At low count rates, significant changes in the radiation level displayed can take up to 30 seconds to stabilize. *For details, see Autoranging in this chapter.*

CPM, CPS, and Total counts are the most direct methods of measurement.

mR/hr and μ Sv/hr are calculated using a conversion factor optimized for Cesium-137. This mode is less accurate for radionuclides other than Cs-137, unless you have calibrated the SEI Inspector EXP for the specific radionuclide you are surveying.

The most immediate indicators of the radiation level are the audio and count light.

Operating in Timer Mode

When the mode switch is set to Timed Count (Total/Timer), the numeric display is updated every second and totaling starts.

Taking a Timed Count

The SEI Inspector EXP can give you a total count for a timed period from 1 minute to 24 hours. The default setting is 10 minutes. A timed total count is useful for determining the average counts per minute over a longer period of time. The number of counts detected by the SEI Inspector EXP varies from minute to minute due to the random nature of radioactivity. When a count is taken over a longer period, the average count per minute is more accurate.

Taking an average allows you to detect low-level contamination or differences in background radiation due to altitude or soil mineral content. For example, if one 10-minute average is 1 count per minute higher than another 10-minute average, the increase is likely due to normal variation. But over 12 hours, a 1 count per minute increase over the 12 hour background average may be statistically significant.

You can end a timed count by pressing the SET button while the remaining time is displayed.

To take a timed count, follow these steps:

1. With the SEI Inspector EXP operating, set the Mode switch to Timed Count (Total/Timer). The display shows 0 and Total in the upper left portion of the display.
2. Press the SET button on the end panel to set the time for your count. You will see the hourglass, and the most recent timing period used. The first time you use the timer, the setting is 00:10 (ten minutes).
3. Use the + and - buttons to set the timing period. The timed period can be for 1 to 10 minutes in one-minute increments, for 10 to 110 minutes in 10-minute increments, or for 2 to 24 hours in 1 hour increments.
4. Press the SET button. The SEI Inspector EXP starts totaling the counts it registers, and the numeric display is updated each time a count is registered. The hourglass indicator flashes during the timed period. During the counting period, if you want to see how many minutes remain, press and briefly hold the SET button. The display counts down from the time setting in hours and minutes to zero. For example, if the display shows 00:21, then 21 minutes remain.
5. At the end of the timed period, the SEI Inspector EXP beeps 3 times and repeats the beeping 3 times. The number displayed is the total count and the hourglass will stop flashing.
6. To find the average dose rate for the timed period, divide the total by the number of minutes. The average count is in counts per minute. To convert to mR/hr for Cesium-137, divide by 3340.
7. Move the Mode switch to one of the dose/rate modes to return to normal operation. If you move the Mode switch to one of the dose/rate modes while the SEI Inspector EXP is taking a timed count, the timed count will continue.
8. To reset the timer to take another timed count, press the SET button to set the time for another count.
9. Press the SET button a second time and the SEI Inspector EXP will start totaling the counts it registers, and the numeric display is updated each time a count is registered.

Using Dose/Rate Modes While Timer is On

Dose/rate modes can be used while the timer is on. In any dose/rate mode, the hour glass indicator will continue to flash during a timed period. At the end of the timed period, the hour glass will remain continuously on, and the SEI Inspector EXP will beep 3 times and repeat 3 times. The timed count can be displayed by returning to the Timed Count mode from other modes.

Using The Alert

The Alert can be set in dose or rate modes. When using Utility Menu option UNITS to switch units of measurement, the alert will retain the user selected alarm level. Once the alert threshold is reached the beeper will sound and the ALARM icon will flash until the alert is deactivated, or the radiation level drops below the set alert threshold.

1. To set the Alert, press the SET button on the end panel. The ALERT icon (radiation symbol) and the SET icon are displayed.
2. Use the + and - buttons to adjust the display to the desired level.
3. Press the SET button once to retain the setting in memory and activate the alert. The ALERT icon (radiation symbol) is now displayed to indicate the unit is operating in the Alert mode.
4. To deactivate the Alert mode, press and briefly hold the SET button again. The ALERT icon is no longer displayed.
5. To use the previous alert setting, press the set button twice. Now the alert mode is on, indicated by the radiation symbol on the display.

Utility Menu

The Utility Menu allows the user to change default settings for several operating parameters. Once a setting is changed, it remains in effect unless they are changed through the Utility Menu or the Observer USB Software.

1. To activate the Utility Menu, hold down the + button on the end panel while turning the instrument on. The display will show the MENU icon. Release the + button and donE will appear along with the MENU icon. *The utility menu can be accessed even if the probe is disconnected.*
2. Scroll through the menu by pushing the + or - buttons.
3. To select an option, push the SET button and the SET icon is displayed.
4. Use the + or - buttons to toggle between choices and press the SET button to enter the new value. The instrument will continue to operate in the Utility Menu mode, and the display will show DONE and MENU. To adjust another Utility Menu option, repeat the above steps.
5. To exit the Utility Menu at any time, press the SET button again when DONE is displayed. The SEI Inspector EXP will continue with the normal start-up routine.

Options

Options	Function	Comments
dLoG	Data Logging (The logging interval can be set in the USB Observer Software)	Turns on or off the data logging feature for storing collected readings in the internal memory. <i>Default is 10 minutes.</i>
UNIT	Unit of Measurement	Selects between mR/hr and CPM or μ Sv/hr and CPS
EFF	Efficiency	Displays the efficiency for the pre-programmed isotopes built into the SEI Inspector.
AVEr	Averaging	Turns Auto-Averaging on and off
CLOC	Clock (We recommend the clock be set prior to collecting data to ensure a correct time and date in your collected data.)	Sets the internal clock for use with the data logging feature.
dEF	Default Settings (Does not change calibration.)	Set the unit to the default settings (<i>Alarm off, Auto Averaging on, mR/hr & CPM, recording off, clears and resets isotopes and backlight time</i>) and exits the Utility Menu
VEr	Version	Displays the firmware version
USE	Use specific isotope efficiency	If surveying a known isotope, select from the list of isotopes efficiencies to display activity in Bq or DPM
donE	Done	Press the SET button when “donE” is displayed to exit the menu and begin taking readings.

Setting the Internal Clock

It is necessary to set the internal clock to properly time stamp the data collection on your device. We recommend the clock be set prior to collecting data to ensure a correct time and date in your collected data.

To set the internal clock, enter into the utility menu, select CLOC, and press set.

1. The seconds are displayed. Use the + and - buttons to select the seconds for the clock and press SET to select your choice.
2. The time will be displayed. The minutes will flash while using the + and - buttons to select the desired minutes and press SET. You will then select the hour and press SET again.
3. The date will be displayed. First set the day and press SET. Then select the month and press SET.
4. The year will be displayed. Select the appropriate year and press SET.

You will now see donE displayed in the Utility Menu. You can now select another item in the Utility Menu or press SET to enter into the normal function of the SEI Inspector EXP.

Interfacing with an External Device

The USB jack on the left side of the SEI Inspector EXP provides an interface for use with the USB Observer Software *Figure 2(10)*. You can use it to record the counts on a computer, download the recorded data, and calibrate the instrument. *For details, see Chapter 7 Observer Software.*

Chapter 4: Common Procedures

The following sections give instructions for several commonly-used procedures. With any procedure, the user must determine the suitability of the instrument or procedure for that application.

Establishing the Background Count

Normal background radiation levels vary at different locations, different times, even in different areas of the same room. To accurately interpret the readings you get on the SEI Inspector EXP, it is good to establish the normal background radiation count rate for each area you plan to monitor. You can do this by taking a timed count. *For more information on using the timer, see Taking a Timed Count in Chapter 3.*

A 10-minute average is moderately accurate. You can repeat it several times and compare the results to establish accuracy. To establish a more accurate average, take a 1 hour timed count. If you need to determine whether there is prior contamination, take averages in several locations, and compare the averages.

Environmental Area Monitoring

You can keep the SEI Inspector EXP in CPM or mR/hr mode whenever you want to monitor the ambient radiation, and look at it from time to time to check for elevated readings.

If you suspect an increase in ambient radiation, use the timer and take a 5 or 10 minute count, and compare the average to your average background count. If you suspect an increase that is too small to detect with a short timed reading, you can take a longer count (for example 6, 12, or 24 hours).

Checking for Surface Contamination

To check a surface, hold the detector window close to the surface, and read the count rate (wait 30 seconds or until the reading has stabilized). If you want to find out if a surface is slightly radioactive, take a timed count or a longer accumulated count.

Chapter 5: Maintenance

The SEI Inspector EXP requires regular calibration and careful handling to assure good measurements. Use the following guidelines to maintain the instrument properly.

Calibration

We recommend that the SEI Inspector EXP be calibrated annually, or as often as your regulations require. The best way to calibrate is using a calibrated source at a calibration lab. *See Chapter 8 for more information.*

The standard by which the SEI Inspector EXP is calibrated is Cesium-137. A certified calibration source should be used. To calibrate the SEI Inspector EXP for another radionuclide, use a calibrated source for that radionuclide or the appropriate conversion factor referenced to Cs-137. CAUTION: Errors can occur when using low level sources or background for calibrating. In the Calibration mode, the smallest increment which can be adjusted is .010.

If you would like more information about source calibrations, please contact us at 1.800.293.5759 or go to seintl.com/services.

General Maintenance Tips

1. Do not get the instrument wet.
2. Be sure to store the meter in a location without direct sunlight, as sunlight can damage the end window of the detector over time.
3. Be sure to store the unit inside the carrying case when not in use.
4. If you are planning to store the unit for a long time, remove the battery to avoid battery corrosion inside the battery compartment.
5. Do not place the unit inside a microwave oven as it can damage the unit and/or the microwave. This instrument is for detecting ionizing radiation such as alpha, beta, gamma, and x-rays. It will not detect non-ionizing radiation such as microwave and radio emissions.
6. Do not place any objects that may puncture the mica end window of the detector near the detector.

Chapter 6: Basics of Radiation and Its Measurement

Ionizing Radiation

Ionizing radiation changes the structure of individual atoms by ionizing them. The ions produced in turn ionize more atoms. Substances that produce ionizing radiation are called radioactive. Radioactivity is a natural phenomenon. Nuclear reactions take place continuously on the sun and all other stars. The emitted radiation travels through space and a small fraction reaches the Earth. Natural sources of ionizing radiation also exist in people and in the ground. The most common sources of ground radiation are uranium and its decay products

Types of Ionizing Radiation

X-Rays

X-rays are man made radiation produced by bombarding a metallic target with electrons at a high speed in a vacuum. X-rays are electromagnetic radiation of the same nature as light waves and radio waves, but at extremely short wavelength, less than 0.1 billionth of a centimeter. They are also called photons. The energy of X-rays are millions of times greater than that of light and radio waves. Because of this high energy level, X-rays penetrate a variety of materials, including body tissue.

Electromagnetic radiation (photons) of higher frequency and energy than visible and ultraviolet light. X-rays are photons emitted by interactions involving orbital electrons rather than atomic nuclei. X-rays and gamma rays have the same basic characteristics. The only difference between them is their source of origin.

Gamma Rays

Gamma rays are almost identical to X-rays. Gamma rays generally have a shorter wavelength than X-rays. Gamma rays are very penetrating and thick lead shielding is generally required to stop them.

Short wavelength electromagnetic radiation higher in frequency and energy than visible and ultraviolet light. Gamma rays are emitted from the nucleus of an atom. These high energy photons are much more penetrating than alpha and beta particles.

Beta Radiation

A beta particle consists of a negatively charged electron emitted from an atom. It has more mass and less energy than a gamma ray, so it doesn't penetrate matter as deeply as gamma and X-rays.

Beta particles have a mass and charge equal to that of an electron. They are very light particles (about 2,000 times less mass than a proton) and have a charge of -1. A few millimeters of aluminum will stop most beta particles.

Alpha Particles

Alpha radiation is a particle that consists of two protons and two neutrons, the same as the nucleus of a helium atom.

Alpha particles are positively charged particles emitted from the nucleus, are relatively large, and very heavy. Due to this strong positive charge and large mass, an alpha particle cannot penetrate far into any material. It generally can travel no more than 1 to 3 inches in air before stopping, and can be stopped by a piece of paper.

Chapter 7: Observer USB Software

The Observer USB reads in Total Counts, CPM, CPS, $\mu\text{R/hr}$, mR/hr , $\mu\text{Sv/hr}$ and has the ability to collect, log the data received, calibrate the unit, and echo the readings collected on a PC. The data is displayed on a graph as well as a digital on-screen meter and can be saved or printed in various ways, including a spreadsheet format. The dwell/count time can be adjusted for each point on the graph. You can also set the length of time for the count. The on-screen display in the software has adjustable settings as well as a settable alarm.

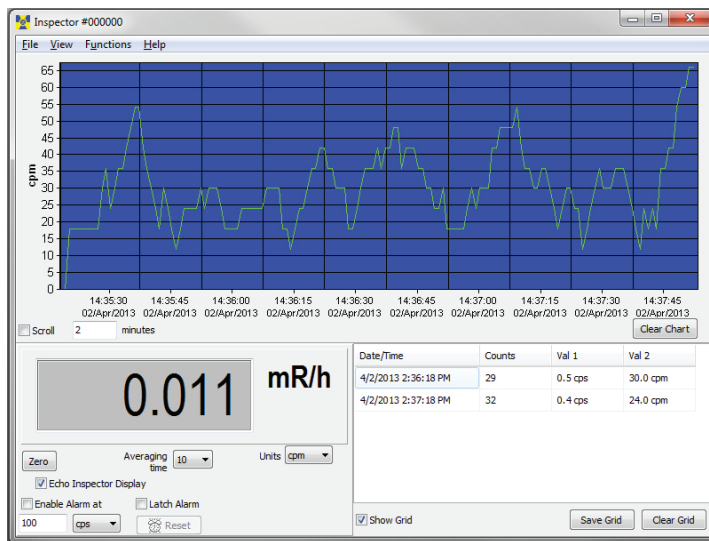
Installing the Observer USB Software

To use the Observer USB Software with your unit, you will first need to install the software prior to connecting your instrument to the computer. You can download a copy at seintl.com/software. After the software has completed downloading, double click on the installer and follow the on-screen prompts. Once the software is installed and started, the detector will be automatically detected and identified once the unit is connected via USB.

Connect to The SEI Inspector EXP

Ensure that you have installed the Observer USB Software before connecting the SEI Inspector EXP. The USB port is a mini-B type jack located on the side of the SEI Inspector EXP above the Output *Figure 2 (9)*. To connect the SEI Inspector EXP, power on your detector, plug the cable into the USB jack, and connect the other end to the USB port on your computer. Note: If the battery icon is on after plugging in your unit to the USB cable connected to the PC, turn the unit off and then on again and the USB Observer will launch.

Once the unit is connected, the Observer Software will launch and open a window for the instrument with a serial number displayed in the upper left corner of the title bar. A new window will open for each detector connected.



Preferences

The alarm settings, auto-save chart feature, and the grid settings for datalogging frequency and units of measurement can be adjusted in View > Preferences menu.

Using the Data Logging Feature

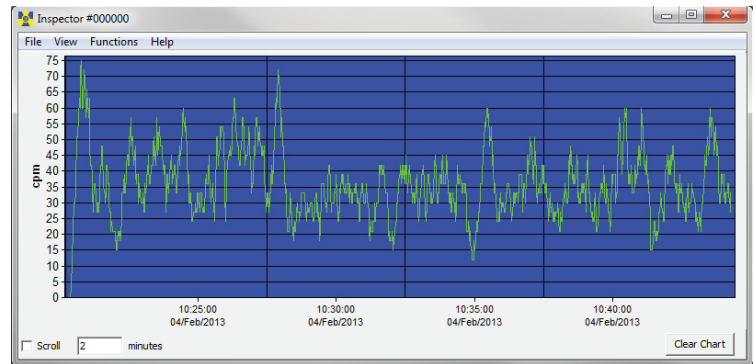
You must set the time and date on the SEI Inspector EXP prior to collecting data. We recommend the clock be set prior to collecting data to ensure a correct time and date in your collected data. If you exceed that amount of time after setting the time and date, you will need to reset the clock to the current time and date. In addition to being able to set the time via the utility menu, the internal clock of the SEI Inspector

EXP can be set to the time on the PC you are using by clicking Functions > Synchronize SEI Inspector EXP to PC Clock. The SEI Inspector EXP will beep twice once synchronization has completed. The update will be recorded in the on board memory if the recording feature is on. *See Chapter 3: Operation, Utility Menu for information on activating the recording feature.*

If the recording feature on the SEI Inspector EXP is activated and the internal clock is set, then the collected data can be retrieved from the unit's internal memory by selecting Functions > Retrieve Memory. Data is stored in a text delimited file, which can be opened in your preferred spreadsheet software. The default data logging frequency is 10 minutes. You can change the value in the Cal Panel of the Observer USB Software.

Show Grid

The Show Grid check box displays the data collected in the grid. The grid displays an ongoing collection of data based on the user selectable settings in the View > Preferences > Grid Settings dialog box. For example, if the grid setting is 60 seconds, a new data point will appear on the grid every minute.



Observer USB Chart Screen

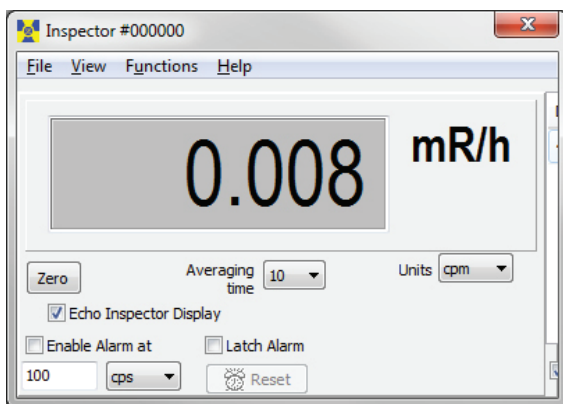
The Observer USB Chart Screen displays a chart of the data currently collected by the attached instrument.

The X Axis

The X axis consists of the time and date stamp of the reading collected and will adjust automatically to display all of the data collected unless the Scroll check box is selected. If the Scroll check box is selected, the X axis will display the latest readings collected in the minute(s) time frame selected next to the Scroll check box. For example, if 2 minutes is selected in the Scroll time, then the chart will display the latest 2 minutes of data collected. The most recent data collected will be shown on the right side of the graph.

The Y Axis

The Y axis displays the unit of measurement for the reading displayed and will automatically adjust to display the highest reading collected.



Observer USB Meter Screen

The Observer USB Meter Screen simulates a digital meter to display the readings collected by the detector.

Enable Alarm

This will enable the alarm that is built into the software. Once the radiation levels go back below the set level of the alarm, the alarm will stop unless you have checked Latch Alarm. When the Latch Alarm is checked, the alarm will continue to go off until the reset button is pressed. This is a USB Observer Software alarm only, not the alarm on the unit itself.

Zero

When the Zero is clicked, the averaging of the collected counts starts over.

Units/Echo Display

When Echo Display is checked, the meter screen will mirror the display of your SEI Inspector EXP and the Units dropdown box selects the unit of measurement displayed on the y axis of the chart screen. When Echo Display is not checked, the meter screen will not mirror the display of your SEI Inspector EXP. You can select your own averaging time and the Units dropdown box selects the unit of measurement displayed on both the y axis of the chart screen and the meter screen.

Averaging Time

The Averaging Time selects the amount of time in which the previous readings are averaged for a more accurate display of the collected counts. The longer the averaging time, the more accurate your reading. Shorter averaging times allow significant changes to be seen more quickly.

Chapter 8: Observer USB Calibration Software

General Discussion of Calibration

In order to have confidence in the measurements taken with a radiation detection instrument, a calibration must be performed. The calibration compares the response of the instrument to known values and the instrument is adjusted (if needed) to bring all indications within the range of the instrument to within $\pm 10\%$ of the true values. Generally, radiation detection instruments should be calibrated annually.

CAUTION: Errors can occur when using low level sources or background for calibrating. In the Calibration mode, the smallest increment which can be adjusted is .010.

Pulse Calibration

Since GM-based instruments are essentially pulse counters, it must be verified that the number of counts reported equals the number of counts input. This should be demonstrated for both count rates and total counts. The issue is confused somewhat with the addition of dead-time compensation where the number of counts in any given second is adjusted upward to account for pulses “lost” during the time the detector is busy recharging from a pulse.

Requirements

You will need a PC running Observer USB and a Pulse generator

Procedure

1. With the instrument powered off, remove the back of the unit and attach a pulse generator to the unlabeled test point immediately to the left of U2. Pulses must be positive with a duration of approximately +3.3 to 5V peak to peak square wave. No high voltage is connected to this test point.
2. Power on the instrument.
3. Connect the instrument to the PC running Observer USB using the USB cable. An application window for the attached instrument should open within a few seconds.
4. Go to *View > Cal Panel* menu of The Observer USB Software to access the Calibration Screen.
5. Record the currently displayed dead time. (*Note the current deadtime*)
6. Change the dead time to 0 and click the Update Settings button. After a second or two the instrument should beep to acknowledge that the new setting has been received, stored, and applied. Setting the dead time to 0 seconds causes the device to not apply any dead-time correction at all, so the display should report the true input pulse rate.
7. Run the pulse generator at several different rates to span the range of the instrument. For the SEI Inspector EXP, the maximum working input pulse rate should be about 367,000 CPM (6.123 Hz). Verify that the value reported by the instrument is within $\pm 10\%$ of the input value in all cases.
8. Change the dead time back to the setting recorded in Step 5.

Calibration Panel

Serial Number: 000002

DeadTime (sec): 1.140E-04

Sensitivity (cpm per mR/h): 3340

Applied Isotope: None (cpm/cps)

Efficiencies (counts per disintegration)

C-14	0.0291
S-35	0.0317
Cs-137	0.2078
P-32	0.2200
Co-60	0.1400
Sr/Y-90	0.2274
I-131	0.0600
Alpha	0.0420

Units: ☒ American (mR/h, cpm, dpm) ☐ Metric (uSv/h, cps, Bq)

Alarm cpm: 334

Preset Counting Time: 10

☐ Use Datalogging

Datalogging Interval (min): 10

☒ Circular Buffer

Clear Memory

Backlight On Time: 10

Contrast: Darker Lighter

☒ Auto Averaging

Update Settings Close

All calibration factors must be entered using the Observer USB software.

Efficiency Calibration

The SEI Inspector EXP can be used beyond simple detection of contamination and can also be used to determine the activity of any beta- or alpha-emitting isotopes present.

Efficiency is the ratio of events detected by the instrument to the number of decays of the particular isotope. The units are therefore counts per disintegration of c/d. Since efficiencies are generally somewhat less than one, they are often multiplied by 100 and expressed as a percentage. However, the Observer USB software requires that values not be entered as percentages. Since efficiency varies based on the energy and abundance of the particular isotope being measured, it is best to determine efficiency for the specific isotope(s) for which the activity is to be determined.

The efficiency is also affected by the size of the source and the source to detector distance. To achieve consistency, efficiencies should be determined using a point source (which means a source with an area significantly smaller than the detector entrance window) at a fixed distance from the detector face (which must be specified, but 1 cm will be assumed to be the standard).

Requirements

You will need a PC running Observer USB, Calibration sources, and a holder to keep constant-geometry to maintain sources 1 cm from the detector entrance window)

Procedure (American Units)

1. Ensure the SEI Inspector EXP is in Timed Count (Total/Timer) mode, displaying COUNTS.
2. Place the SEI Inspector EXP in the location where the efficiency calibration will be performed and take a count of at least 10 minutes. Divide the total number counts by the acquisition time (in minutes) to calculate the background counting rate (RB) in CPM. Record this value.
3. Center the source 1 cm from the end window of the SEI Inspector EXP's external probe (*the small radiation symbol on the back of the probe marks the center of the detector*) and take a count of at least 1 minute. Divide the total number of counts by the counting time (in minutes) to calculate the gross count rate (gcpm or RG).
4. Calculate the efficiency using the following equation:

$$Eff = \frac{(R_G - R_B)}{A}$$

Where

Eff is instrument efficiency in counts per disintegration

RG is the gross count rate in counts per minute (cpm)

RB is the background count rate in cpm

A is the activity of the source in disintegrations per minute (dpm)

5. Repeat Steps 3 and 4 for additional radionuclides.
6. If you would like to record efficiency values in the SEI Inspector EXP's memory for any of the supported radionuclides (S-35, Sr/Y-90, Cs-137, P-32, C-14, I-131, Co-60, ALPHA), continue with the following steps.
7. Connect the SEI Inspector EXP to the PC running Observer USB using the USB cable. An application window for the SEI Inspector EXP should open within a few seconds.
8. Display the control panel by clicking View|Cal Panel.
9. Enter the updated efficiencies in the appropriate fields.
10. If you would like the SEI Inspector EXP to display in activity units (i.e., DPM) for a specific source instead of the count rate (CPM), select it from the Applied Isotope dropdown box. Otherwise, leave as None (cpm/cps).
11. When all relevant values have been updated, click the Update Settings button. After a second or two the SEI Inspector EXP should beep twice to acknowledge receiving the updated settings.

Procedure (Metric Units)

1. Power on the SEI Inspector EXP. Make sure the SEI Inspector EXP is in Timed Count (Total/Timer) mode displaying COUNTS.
2. Place the SEI Inspector EXP in the location where the efficiency calibration will be performed and take a count of at least 10 minutes. Multiply the acquisition time by 60 to convert it from minutes to seconds. Divide the total number counts by the acquisition time (in seconds) to calculate the background counting rate (RB) in cps. Record this value.
3. Center the source 1 cm from the end window of the SEI Inspector EXP's external probe (*the small radiation symbol on the back of the probe marks the center of the detector*) and take a count of at least 1 minute. Divide the total number of counts by the counting time (in seconds) to calculate the gross count rate (gcps or RG).
4. Calculate the efficiency using the following equation:

$$Eff = \frac{(R_G - R_B)}{A}$$

Where

Eff is instrument efficiency in counts per disintegration

RG is the gross count rate in counts per second (cps)

RB is the background count rate in cps

A is the activity of the source in disintegrations per second (dps) or becquerels (Bq)

5. Repeat Steps 3 and 4 for additional radionuclides.
6. If you would like to record efficiency values in the SEI Inspector EXP's memory for any of the supported radionuclides (S-35, Sr/Y-90, Cs-137, P-32, C-14, I-131, Co-60, ALPHA), continue with the following steps.
7. Connect the SEI Inspector EXP to the PC running Observer USB using the USB cable. An application window for the SEI Inspector EXP should open within a few seconds.
8. Display the control panel by clicking View|Cal Panel.
9. Enter the updated efficiencies in the appropriate fields.
10. If you would like the SEI Inspector EXP to display in activity units (i.e., DPM) for a specific source instead of the count rate (CPM), select it from the Applied Isotope dropdown box. Otherwise, leave as None (cpm/cps).
11. When all relevant values have been updated, click the Update Settings button. After a second or two the SEI Inspector EXP should beep to acknowledge receiving the updated settings.

Exposure Rate Calibration

An exposure rate calibration correlates the number of counts in a given time to the exposure rate present in that field. This is in many ways similar to efficiency but we refer to it in this case as gamma sensitivity. Although it is possible to express this value in several different units, the SEI Inspector EXP uses a formula of CPM/mR/hr (counts per minute per milliroentgen per hour).

The instrument is placed in gamma radiation fields of different (but known) intensities that span the working range of the instrument, and the settings are adjusted (if needed) such that all measurements are within $\pm 10\%$ of the true value. The relevant settings include both the sensitivity and the dead time.

The gamma field is usually generated by a relatively strong Cs-137 source. Exposure rates are calculated to the center of the detector's volume.

Requirements

You will need a PC running Observer USB and a Gamma calibration range

Procedure

1. Power on the instrument.
2. Connect the instrument to the PC running Observer USB using the USB cable. An application window for the attached instrument should open within a few seconds.
3. Display the calibration panel by clicking View|Cal Panel.
4. Record the displayed values for Dead Time and Sensitivity.
5. Begin checking the instrument's Sensitivity. Place the instrument in a relatively low field, approximately 5 mR/hr, and allow it 30 seconds or so to stabilize.
6. If the indicated response is off by more than 3% at this level, adjust the Sensitivity to a lower value if the instrument is reading too low, or to a higher value if the instrument is reading too high. After changing the value on the Calibration Panel, click the Update Settings button. After a second or two the instrument will beep to indicate that the new value has been received.
7. Repeat Step 5 as needed to bring the instrument indication as close as possible to the true value.
8. Next, expose the instrument to a field near the top of its range of 100 mR/hr. Allow the reading to stabilize for at least 30 seconds. In the preferences tab, you can adjust the time in the grid to show a selected average count.
9. If the indicated response is off by more than 10%, adjust the Dead Time to a lower value if the instrument reading is too low, or to a higher value if the instrument reading is too high. After changing the value on the Calibration Panel, click the Update Settings button. After a second or two the instrument will beep twice to indicate that the new value has been received.
10. Repeat step 9 as needed to bring the instrument's indication within $\pm 10\%$ of the true value.
11. Once the values for Sensitivity and Dead Time have been verified to be correct, expose the instrument to a series of values spanning the range of the instrument. All indications should be within $\pm 10\%$ of the true value.

Chapter 9: Built in Isotope Efficiencies

Built in Isotope Efficiencies

The SEI Inspector EXP has a number of built in efficiencies for specific isotopes. If you know the isotope being surveyed, then you can select one of the pre-programmed isotope efficiencies to calculate the activity of your known source. The activity (*DPM and Bq*) is different from the rates of exposure (*mR/hr, μ Sv/hr, CPM, and CPS*). Activity is the number of disintegrations of a radioactive substance in a given unit of time, which is specific to the isotope being detected. The efficiencies programmed into the SEI Inspector EXP USB are based on the geometry of a 1 cm distance from the end window of the detector. *Caution: Do not use the built in efficiencies unless you are surveying a known isotope, as doing so will give you inaccurate results.*

Decay

When an atom emits an alpha or beta particle or a gamma ray, it becomes a different type of atom. Radioactive substances may go through several stages of decay before they change into a stable, or non-ionizing, form. For example; U-238 has 14 different stages of decay before it stabilizes.

An element may have several forms or isotopes. A radioactive isotope of an element may be called a radioisotope. However, the more correct term is radionuclide.

Selecting a Built-In Isotope Efficiency

Enter the Utility Menu and scroll to the USE menu item and press SET on the end panel of the unit to select the isotope efficiency you want to use for your survey. For example, if you know you are surveying Iodine-131, then you would select I131 from the menu. Once you have selected the corresponding isotope, press the SET button to select it. Press SET again to begin normal operation of the SEI Inspector EXP.

You can select from any of the following isotope efficiencies built into the SEI Inspector EXP: ³⁵Sulfur (S-35), ⁹⁰Strontium (Sr/y-90), ¹³⁷Cesium (Cs-137), ³²Phosphorus (P-32), ¹⁴Carbon (C-14), ¹³¹Iodine (I-131), ⁶⁰Cobalt (Co-60), and Alpha.

Selecting Between DPM and Bq

Enter the Utility Menu and scroll to the UNIT menu item and press SET on the end panel of the unit to change the units of measurement between DPM (when mR/hr and CPM are selected) and Bq (when μ Sv/hr and CPS are selected).

Chapter 10: Troubleshooting

The SEI Inspector is a highly reliable instrument. If it does not seem to be working properly, look through the following chart to see if you can identify the problem.

Problem	Possible Cause	Action
Display works, but no counts are registered	defective Geiger tube or bad cable	look through the window to check the mica surface of the tube; if it is wrinkled or a break is visible, replace it
Reading is high, but another instrument has a normal reading in the same location	possible contamination	scan the SEI Inspector with another instrument. You may need to replace the rubber strips on back of the SEI Inspector
Instrument has false high reading	moisture	circuit board may be wet; dry the instrument in a warm dry place; if it still has a problem, it requires service
Instrument has false high reading or OVERRANGE	photosensitivity	remove from direct sunlight and ultra-violet sources; if the high count drops, the mica window coating may have washed off the Geiger tube due to getting wet; the tube will need to be replaced
	continuous discharge	replace the Geiger tube
	electromagnetic field	move the instrument away from possible sources of electromagnetic or radio frequency radiation
Display is blank	no battery, dead battery, poor battery connection defective LCD	install a new 9-volt battery (<i>if count light and audio work, the LCD may need to be replaced</i>)
There is wrong or no time and date stamp on my collected data.	Internal Clock has reset. The instrument has been powered off	Reset the clock to the current time using the Observer Software or the Utility Menu.

Chapter 11: Basics of Taking Measurements

The SEI Inspector EXP will not detect neutron, microwave, RF (radio frequency), laser, infrared, or ultraviolet radiation. All of our instruments are most accurate for Cesium-137 and isotopes of similar energies. Some isotopes detected relatively well by most Geiger counters are Cobalt-60, Technicium-99M, Phosphorous-32, Strontium-90, and many forms of Radium, Plutonium, Uranium, and Thorium.

Some forms of radiation are very difficult or impossible for a Geiger tube to detect. Tritium, for example, is a by-product of a nuclear reactor and is used in research. The beta emissions from Tritium are so weak that there are very few instruments that are capable of detecting it. More sophisticated equipment is needed for the measurement of environmental samples, such as radioactivity in milk, produce, soil, etc., unless you are looking for gross contamination.

The radiation from some isotopes can cause a Geiger tube to overexcite and indicate a higher level of radiation than is actually present. Americium 241 is an example of this phenomenon. Americium 241 is used in some smoke detectors and many different types of industrial density and flow meters.

Unless you know exactly what you are measuring and understand the limitations of detection instruments, it is possible to draw misleading conclusions from your readings. We design our instruments to detect the broadest range of ionizing radiation possible and still be affordable. The full spectrum of ionizing radiation cannot be measured by one single instrument. Everyone agrees that radioactive materials can be dangerous. We encourage you to seek out other sources of information.

How to Detect Background Radiation

To see what the background radiation is in your area, simply turn the instrument on and, after the 30 second start up beep, the general background radiation will be displayed.

How To Survey a Surface

When surveying a surface, such as a counter top, you will need to hold the SEI Inspector EXP about 1-2 centimeters from the surface while moving the unit horizontally across the survey area at a rate of 2 inches per second.

How to Perform a General Survey

A general survey would be used to find a potential source. For example, if you are looking for a potential source in a pile of scrap, the SEI Inspector EXP will typically detect about 2 feet into a pile. It is easier to find a source when the SEI Inspector EXP is set to Fast Response mode. However, even if the SEI Inspector EXP is in Auto-Averaging mode, the audio clicks that indicate a count should be a sufficient indicator if a potential source is present. To find the source, slowly move the SEI Inspector EXP in the direction of the higher readings or clicks until the potential source is found.

Geiger counters can detect the four main types of ionizing radiation: alpha, beta, gamma, and x-rays. Some detect only gamma and x-rays. Our instruments are calibrated to Cesium 137, but also serve as excellent indicators for many other sources of ionizing radiation. Gamma and x-rays are measured in milliroentgens per hour (mR/hr), microsieverts ($\mu\text{Sv/hr}$), or millisieverts (mSv/hr). Alpha and beta are measured in counts per minute (CPM) or counts per second (CPS).

The window of the GM tube is very thin mica. This mica window is protected by a screen. Some levels of alpha, low energy beta, gamma, and x-rays that cannot penetrate the plastic case or the side of the tube can be sensed through the window.

Try not to touch the instrument to any suspected radioactive substance.

Although some beta and most gamma radiation can go through protective gear, try to avoid skin contamination and ingestion. When you leave a radioactive area, remove any protective outerwear and dispose of it properly. If you think you have been contaminated, as an additional precaution, shower and consult a physician.

How to Determine Alpha, Beta, or Gamma source.

To determine whether the radiation detected is alpha, beta, or gamma, hold the instrument toward the source.

Alpha: If there is no indication through the back of the case (the side of the tube), position the window close to but not touching the source. If there is an indication, it is alpha, beta, or low energy gamma. If a sheet of paper placed between the window and the source stops the indication, it is most likely alpha. To avoid particles falling into the instrument, do not hold the source above the window.

Beta: Place a piece of aluminum about 1/8 inch (3 mm) thick between the instrument and the source. If the indication stops, decreases, or changes, it is most likely beta radiation. Most common isotopes emit both beta and gamma radiation. This is why the indication would decrease or change but not stop.

The non-occupational dose limits set by the government is 100 mR above background annually.

It is up to the individual to decide what a safe radiation level is. It will be different depending on the individual and their knowledge of radiation and its affects. Radiation levels will vary according to location and circumstances. As an example; if your background level is 25 CPM (counts per minute) where you live, when you fly in an airplane at 30,000 feet your rate meter may measure 200 CPM (.2 mR) for 2 to 5 hours. That is 8 times your normal background radiation on the ground, but it is only for a limited amount of time.

When measuring radiation in an emergency response situation, it is good to have something to compare your readings to. Taking a background radiation level reading in your area before a radiation event will help you determine if you have an elevated level of radiation and whether or not to stay in that location. Background radiation is naturally occurring radiation that is always present. It includes high energy gamma rays from the sun and outer space and alpha, beta, gamma radiation emitted from elements in the earth. Using a rate meter, you can determine your normal background radiation levels.

Gamma and X-Rays: If there is an indication of radioactivity, it is most likely gamma or high energy beta. Low energy gamma and x-rays (10-40 keV) cannot penetrate the side of the GM tube, but may be detected through the window.

If you perform the alpha/beta test above and there is no change or only a very slight change in the indication, the source is emitting primarily gamma radiation.

Radiation Measurement Units

Several different units are used to measure radiation, exposure and dosage.

Roentgen is the amount of X-radiation or gamma radiation that produces one electrostatic unit of charge in one cc of dry air at 0° C and 760 mm of mercury atmospheric pressure. One thousand milliroentgen (1,000 mR)= 1R. The SEI Inspector EXP displays in milliroentgens per hour (mR/hr).

Rad is the unit of exposure to ionizing radiation equal to an energy of 100 ergs per gram of irradiated material. This is approximately equal to 1.07 roentgen.

Rem is the dosage received from exposure to a rad. It is the number of rads multiplied by the quality factor of the particular source of radiation. The rem and millirem are the most commonly-used measurement units of radiation dose in the U.S. 1 rem= 1 rad.

Sievert is the standard international measurement of dose. One sievert is equivalent to one hundred rems. A microsievert (μSv) is one millionth of a sievert. A unit of dose equivalent. 1 Sv= 100 roentgens, 10 μSv/hr = 1 milliroentgen/hr.

Curie is the amount of radioactive material that decays at the rate of 37 billion disintegrations per second, approximately the decay rate of one gram of radium. Microcuries (millionths of a curie) and picocuries (trillionths of a curie) are also often used as units of measurement.

Becquerel (Bq) is defined as the activity of a quantity of radioactive material in which one nucleus decays per second. 1 dps (one disintegration per second).

Converting CPM to mR/hr

$$\text{mR/hr} = \frac{\text{cpm}}{\text{sensitivity}}$$

Sensitivity is expressed in cpm per mR/hr (Counts Per Minute for every milliroentgen the GM tube can detect) referenced to Cs-137. Mathematically the cpm units cancel each other out leaving mR/hr, as shown below.

$$\frac{\frac{\text{cpm}}{\text{cpm}}}{\text{mR/hr}} = \frac{\text{cpm}}{1} \times \frac{\text{mR/hr}}{\text{cpm}} = \text{mR/hr}$$

For example, if you have collected 200 CPM with the Radiation Alert SEI Inspector EXP, which has a typical gamma sensitivity of 3340 cpm per mR/hr, you would divide the 200 cpm by the 3340 cpm per mR/hr sensitivity. The cpm cancels out and you are left with 200/3340 mR/hr = 0.057 mR/hr

$$\frac{200 \text{ cpm}}{3340 \frac{\text{cpm}}{\text{mR/hr}}} = 0.057 \text{ mR/hr}$$

Chapter 12: Glossary of Common Terms

Background Radiation

Naturally occurring radiation is always present, it includes high energy gamma rays and particles from the sun and outer space and alpha, beta, and gamma radiation emitted from elements in the earth.

CPM (counts per minute)

The unit of measurement usually used to measure alpha and beta radiation.

Ion

An atomic particle, atom, or molecule that has acquired an electrical charge, either positive or negative, by gaining or losing electrons.

Ionization

The process by which neutral atoms or molecules are divided into pairs of oppositely charged particles known as ions.

Ionizing Radiation

Radiation capable of producing ionization by breaking up atoms or molecules into charged particles called ions.

Radiation

The emission and propagation of energy through space or through matter in the form of particles or waves.

Radionuclide

The naturally occurring or artificially produced radioactive form of an element.

Decay

When an atom emits an alpha or beta particle or a gamma ray, it becomes a different type of atom. Radioactive substances may go through several stages of decay before they change into a stable, or non-ionizing, form. For example; U-238 has 14 different stages of decay before it stabilizes. An element may have several forms, or isotopes. A radioactive isotope of an element may be called a radioisotope. However, the more correct term is radionuclide.

Half-life

Each radionuclide has a characteristic half-life, which is the time required for half of a quantity of the material to decay.

Appendix A: Technical Specifications

Detector

Internal Halogen-quenched, uncompensated GM tube with thin mica window, 1.4-2.0 mg/cm² areal density. Effective diameter of window is 45 mm (1.77 in.). Radiation symbol on front label and end panel marks the center of the detector.

Averaging Periods

Display updates every 3 seconds. At low background levels, the update is the average for the past 30-second time period. The timed period for the average decreases as the radiation level increases.

Operating Range

mR/hr - .001 (1μR) to 100 CPM - 0 to 350,000

μSv/hr - .01 to 1000 CPS - 0 to 5000

Timed Count (Total/Timer) - 1 to 9,999,000 counts

Accuracy (Cs¹³⁷)

mR/hr ±10% typical (NIST), ±15% max - 0 to 100

μSv/hr ±10% typical (NIST), ±15% max - .01 - 1000

CPM ±10% typical (NIST), ±15% max - 0 to 350,000

Energy Sensitivity

Detects Alpha down to 2 MeV. Detects Beta down to .16 MeV; typical detection efficiency at 1 MeV is approx. 25%. Detects Gamma down to 10 KeV through the end window. 3340 CPM/mR/hr (Cs¹³⁷). Smallest detectable level for I¹²⁵ is .02 μCi at contact.

Display

4 digit liquid crystal display with indicators. Display updates every 3 seconds.

Alert Set Range

mR/hr .001 - 50 and CPM 1 - 160,000. 70db @ 1m. Pulsating beeper sounds the alert. Adjustable alert levels are used for mR/hr / CPM, and μSv/hr / CPS. Alarm will sound when in Timer Mode when set alarm threshold is reached.

Count Light

Red LED flashes with each radiation event.

Audio Indicator

Internally mounted beeper (can be switched off for silent operation)

Outputs

Dual miniature jack drives CMOS or TTL devices and counts to computer or datalogger.

USB for use with Observer USB Software for PCs

Anti-Saturation

Meter will hold at OVER RANGE in fields as high as 100 times the maximum reading.

Power Requirements

One 9-volt alkaline battery. Battery life is approx. 2000 hours at normal background.

Temperature Range

-10°C to 50°C (14°F to 122°F)

Weight

275 grams (9.7 oz.) without battery.

Size

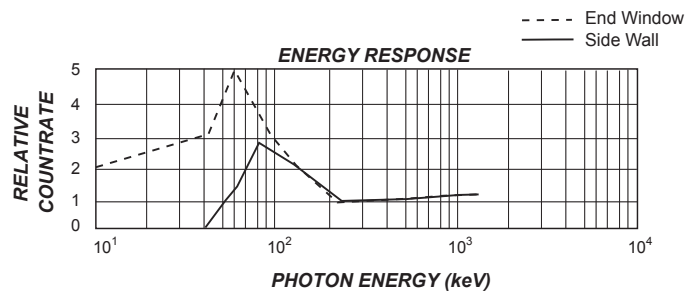
150 x 80 x 30 mm (5.9 x 3.1 x 1.2 in.).

Includes

Carrying Case, Certification of Conformance, Observer USB Software

Limited Warranty

1 year limited warranty.



Appendix B: Limited Warranty

WARRANTOR: S.E. International, Inc., P.O. Box 39, 436 Farm Road, Summertown, TN 38483-0039, USA, (931) 964-3561

ELEMENTS OF WARRANTY: S.E. International, Inc., warrants for 90 days the Geiger-Mueller tube and for one year all materials and craftsmanship in this product to be free from all defects with only the limitations set out below.

WARRANTY DURATION: The warranty shall terminate and be of no further effect one year (90 days on the GM tube) after the original date of purchase of the product or at the time the product is: a) damaged or not maintained as is reasonable or necessary, b) modified, c) repaired by someone other than the warrantor for a defect or malfunction covered by this Warranty, d) contaminated with radioactive materials, or e) used in a manner or purpose for which the instrument was not intended or contrary to S.E. International, Inc.'s written instructions. This warranty does not apply to any product subjected to corrosive elements, misuse, abuse, or neglect.

STATEMENT OF REMEDY: In the event that the product does not conform to the warranty at any time while this warranty is effective, the Warrantor will repair the defect and return the instrument to you prepaid, without charge for parts or labor.

NOTE: While the product will be remedied under this warranty without charge, this warranty does not cover or provide for the reimbursement or payment of incidental or consequential damages arising from the use of or the inability to use this product. The liability of the company arising out of the supplying of this instrument, or its use, whether on warranties or otherwise, shall not in any case exceed the cost of correcting defects in the instrument, and after the said one year (90 days on the tube) period all such liability shall terminate. Any implied warranty is limited to the duration of the written warranty.

PROCEDURE FOR OBTAINING PERFORMANCE OF WARRANTY: In the event that the product does not conform to this warranty, please write or call to the address above. S.E. International, Inc. will not accept contaminated instruments for calibration or repair under warranty or otherwise.

NOTE: Before using this instrument, the user must determine the suitability of the product for his or her intended use.

Calibration Database Application

Please fill out this form and send it back to us if you would like to be notified of the NIST calibration renewal for your instrument to:

S.E. International, Inc.

P.O. Box 39, 436 Farm Rd. Summertown, TN 38483
1.800.293.5759 | 931.964.3561 | Fax: 1.931.964.3564
www.seintl.com | radiationinfo@seintl.com

NAME

MODEL NAME

COMPANY

SERIAL NUMBER

ADDRESS

DATE PLACED IN SERVICE

CITY

EMAIL

STATE, ZIP, & COUNTRY

PHONE NUMBER

Or fill out the form online at
<http://seintl.com/calibrations/>

